



Treatment Overview

Visit TECARTUS.com to find more information about any of the topics in this book, watch videos, and hear perspectives from real patients and caregivers.



Please see [Important Facts](#) for additional safety information.

Welcome to your treatment overview

This resource has been created for patients and caregivers who are learning about TECARTUS® treatment.

Your treatment team is your best source of information about treatment. You may also use this book as a quick reference for important topics.



What you can find in this book

What is the treatment process?	4
How does TECARTUS work?	7
What’s important to know about TECARTUS?	8
Where can I find support?	10
How was TECARTUS studied?.	12
Important Facts	17

Who is TECARTUS for?

TECARTUS is a treatment for adults with mantle cell lymphoma (MCL) or acute lymphoblastic leukemia (ALL). It is used following disease progression while on or after other treatment.

What is TECARTUS?

TECARTUS is a **CAR T-cell therapy**. It is different than other cancer medicines because it is made from your own white blood cells (T cells), which have been modified to recognize and attack your lymphoma cells.

SELECTED IMPORTANT SAFETY INFORMATION What are the possible or reasonably likely side effects of TECARTUS?

The most common side effects of TECARTUS include:

- Fever (100.4°F/38°C or higher)
- Low white blood cells (can occur with a fever)
- Low red blood cells
- Low blood pressure (dizziness or lightheadedness, headache, feeling tired, short of breath)
- Fast heartbeat
- Confusion
- Difficulty speaking or slurred speech
- Nausea
- Diarrhea

TECARTUS may increase your risk of getting cancers including certain types of blood cancers. Your healthcare provider should monitor you for this.

These are not all the possible side effects of TECARTUS. Call your healthcare provider about any side effects that concern you. You are encouraged to report negative side effects of prescription drugs to the FDA. Visit www.fda.gov/medwatch or call 1-800-FDA-1088.

What is the treatment process?

CAR T-cell therapy is a multi-step process that includes a one-time infusion of TECARTUS®. Remember that your timeline might vary since your treatment team will make changes to suit your specific needs.

Step 1
CAR T consultation
Time may vary

Step 2
T cell collection
1 day

Step 3
CAR T cells are made
At least 2–3 weeks

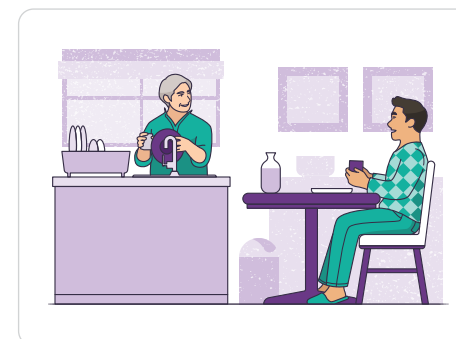
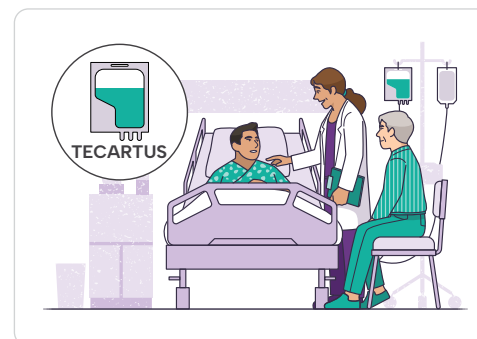
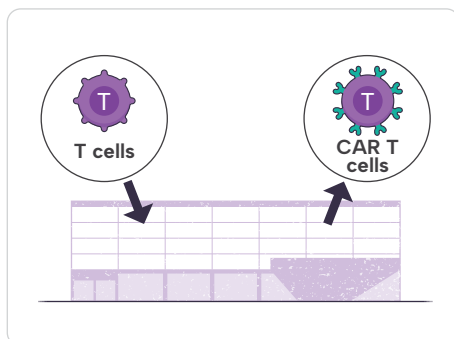
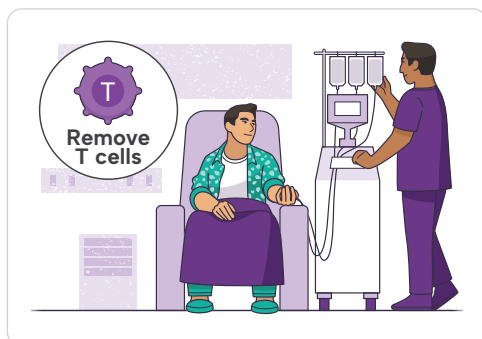
Step 4
Low-dose chemotherapy
3 days

Step 5

TECARTUS infusion and close monitoring
At least 1 or 2 weeks, based on cancer type

Step 6
Continued monitoring
Until at least 4 weeks after infusion

Step 7
Recovery at home
Ongoing



Visit [TECARTUS.com/receiving-tecartus](https://tecartus.com/receiving-tecartus) or use this QR code to find these steps explained in more detail and in a video format.



SELECTED IMPORTANT SAFETY INFORMATION

What should I avoid after receiving TECARTUS?

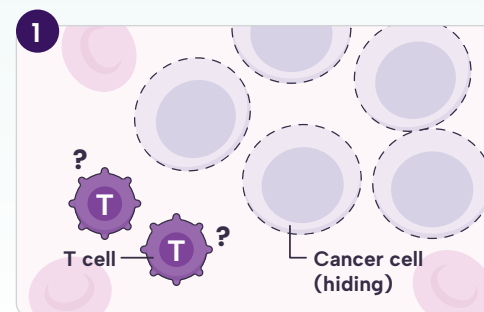
- Do not drive, operate heavy machinery, or do other dangerous things for 8 weeks after you get TECARTUS because the treatment can cause sleepiness, confusion, weakness, and temporary memory and coordination problems.
- Do not donate blood, organs, tissues, or cells for transplantation.

SELECTED IMPORTANT SAFETY INFORMATION

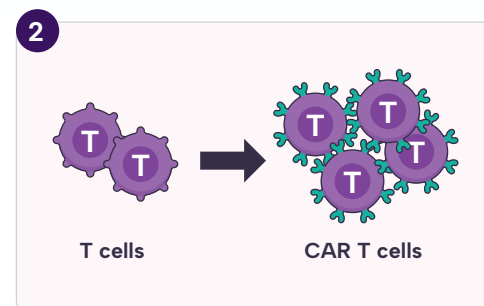
How will I receive TECARTUS®?

- Since TECARTUS is made from your own white blood cells, your blood will be collected by a process called “leukapheresis” (loo-kah-fur-ee-sis), which will concentrate your white blood cells.
- Your blood cells will be sent to a manufacturing center to make your TECARTUS.
- Before you get TECARTUS, you will get 3 days of chemotherapy to prepare your body.
- When your TECARTUS is ready, your healthcare provider will give it to you through a catheter placed into your vein (intravenous infusion). The infusion usually takes less than 30 minutes.
- You will be monitored where you received your treatment daily for at least 7 days for patients with MCL and at least 14 days for patients with ALL after the infusion.
- You should plan to stay close to a certified healthcare facility for at least 4 weeks after getting TECARTUS. Your healthcare provider will help you with any side effects that may occur.
- You may be hospitalized for side effects. Your healthcare provider will discharge you if your side effects are under control and it is safe for you to leave the hospital.
- Your healthcare provider will want to do blood tests to follow your progress. It is important that you do have your blood tested. If you miss an appointment, call your healthcare provider as soon as possible to reschedule.

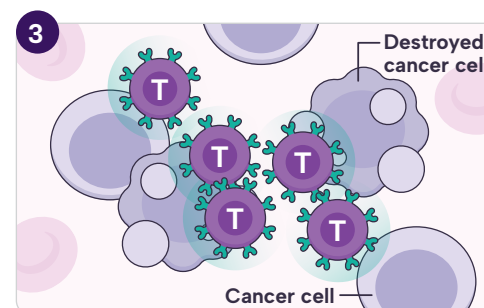
How does TECARTUS work?



T cells are part of your immune system, and help your body fight diseases, from the common cold to cancer. But in some blood cancers, your T cells cannot recognize the cancer cells, which can allow the cancer cells to grow.



In CAR T-cell therapy, your T cells are modified to have receptors called Chimeric Antigen Receptors (CARs). This turns them into CAR T cells. This is a careful process that usually takes at least 2–3 weeks and has many quality checks.



Once in your body, your new CAR T cells can now recognize certain blood cancer cells and attack them.

Visit [TECARTUS.com/tecartus-at-a-glance](https://tecartus.com/tecartus-at-a-glance) to watch a video about how TECARTUS works.



What's important to know about TECARTUS®?



TECARTUS is only given at [certified treatment centers](#), also known as authorized treatment centers. These centers have medical staff who are specifically trained to take care of you throughout the whole CAR T-cell therapy process.



Each step of treatment can take time to organize and prepare for. Talk to your treatment team about planning for CAR T.



TECARTUS may cause side effects that are life-threatening and can lead to death. Your treatment team at the certified treatment center will be working with you to closely monitor and manage side effects. You can also find more information about side effects in the [Important Facts](#).



Some side effect symptoms can be hard for patients to recognize, and this is one of the reasons you will need a dedicated caregiver. If you don't have a dedicated caregiver, you can work with your treatment team to come up with a solution.

Is TECARTUS covered by insurance?

Many insurance plans provide coverage for treatment. Your treatment team will look into your insurance coverage as part of the CAR T consultation process. They will work with your insurance provider to determine what your coverage will be.

You can talk to your treatment team to ask any questions you may have and discuss all the costs associated with TECARTUS.

If you don't have insurance, talk to your healthcare team about options available to you. There are other organizations that may be able to provide support if you are prescribed TECARTUS.



SELECTED IMPORTANT SAFETY INFORMATION

Before getting TECARTUS, tell your healthcare provider about all your medical problems, including if you have or have had:

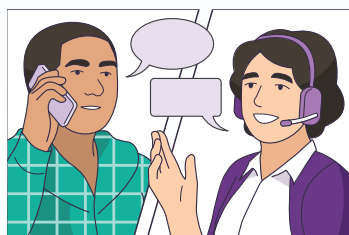
- Neurologic problems (such as seizures, stroke, or memory loss)
- Lung or breathing problems
- Heart problems
- Liver problems
- Kidney problems
- A recent or active infection

Tell your healthcare provider about all the medications you take, including prescription and over-the-counter medicines, vitamins, and herbal supplements.

Where can I find support?

You don't have to figure everything out by yourself. Your treatment team is the best resource for support throughout treatment.

Our knowledgeable team at Kite is also dedicated to helping answer your questions about the support options. You can call them at:



1-844-454-KITE [5483]

Monday–Friday

8 am–9 pm ET

5 am–6 pm PT

Where else can I find support?

Many organizations offer help throughout the process. You can ask your treatment team about other support that might be available.



Financial support



Mental health, emotional support, and peer groups



Travel and lodging support



Physical wellness support



Day-to-day support



Educational support

Visit TECARTUS.com/resources-and-support to find links to resources in each of these support categories, as well as a video library.



Support for caregivers

Caregivers play a major role in supporting the patient, and this is especially true for CAR T treatment.



Being a caregiver can be physically and emotionally demanding. It's common to overlook your own needs, but this can lead to burnout. Remember to take care of yourself, too.

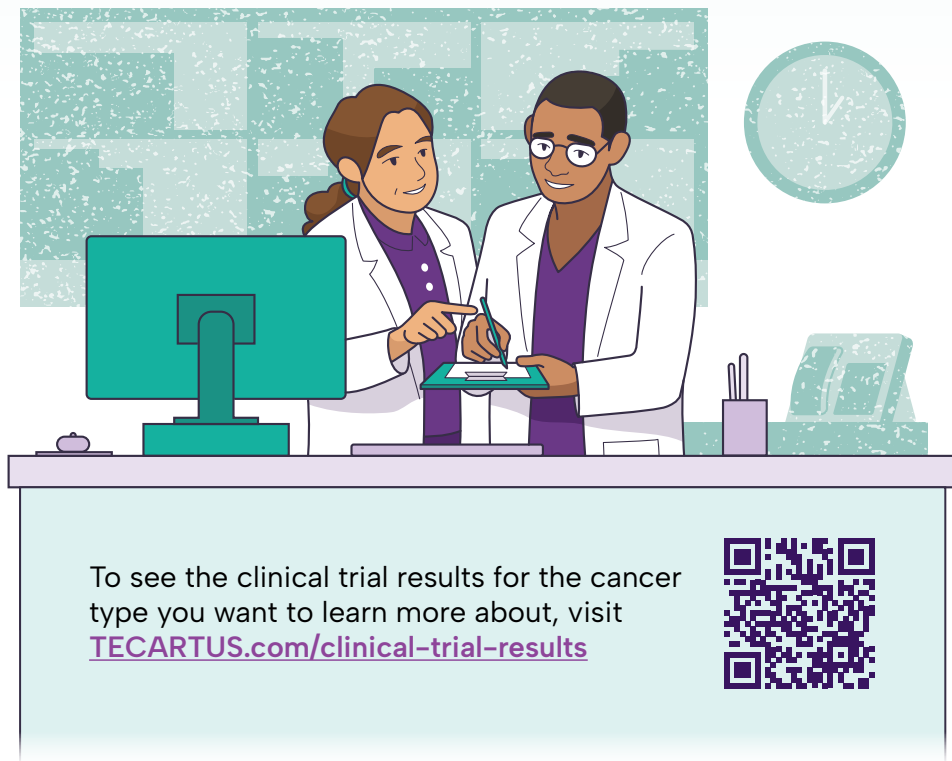
You can ask your treatment team about support that might be available. Many organizations that support caregivers can also be found at the website link below.

You can also visit TECARTUS.com/caregiver-support to find links to a variety of caregiver-specific resources.



How was TECARTUS® studied?

TECARTUS has been studied across multiple clinical trials to look at how well it works, how safe it is, and who it might help. The FDA has approved TECARTUS for multiple uses based on the outcomes of these trials.



What are the possible side effects?

Patients in TECARTUS clinical trials also experienced side effects.



Because TECARTUS is a treatment that works on your immune system, there is a risk that your immune system may become overactive and affect the rest of your body in unwanted ways.

Two side effects that many patients have experienced are [Cytokine Release Syndrome](#) (CRS) and [Neurotoxicity](#):

CRS and Neurotoxicity can become life-threatening and can lead to death. Call or see your healthcare provider or get emergency help right away if you get any of the following:

- Fever (100.4°F/38°C or higher)
- Difficulty breathing
- Chills or shaking chills
- Confusion
- Dizziness or lightheadedness
- Severe nausea, vomiting, or diarrhea
- Fast or irregular heartbeat
- Severe fatigue or weakness

It is important to tell your healthcare provider that you received TECARTUS and to show them your TECARTUS [Patient Wallet Card](#). Your healthcare provider may give you other medicines to treat your side effects.

You can learn more about these and other possible side effects by:

- talking to your treatment team
- reading the [Important Facts](#)
- visiting the [Managing side effects](#) page to learn more about how to look out for side effects



Talk to your doctor or visit
TECARTUS.com for more
information.

Please see **Important Facts** about
TECARTUS for additional safety information.

TECARTUS, the TECARTUS Logo, KITE, and the Kite Logo are
trademarks of Kite Pharma, Inc. GILEAD is a trademark of Gilead
Sciences, Inc. © 2024 Kite Pharma US-TEC-00225 09/2024

